

Customer Information Sheet

DRAWING No.: S7111-42R

SHEET 2 OF 2

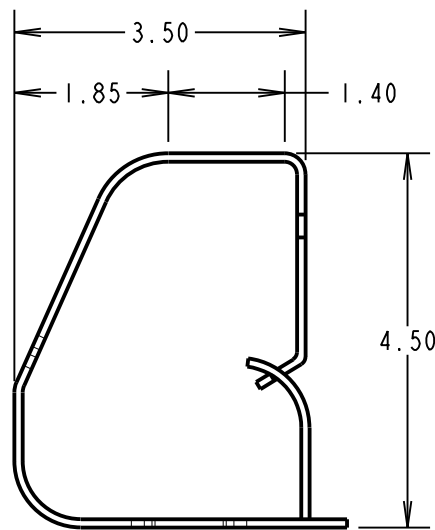
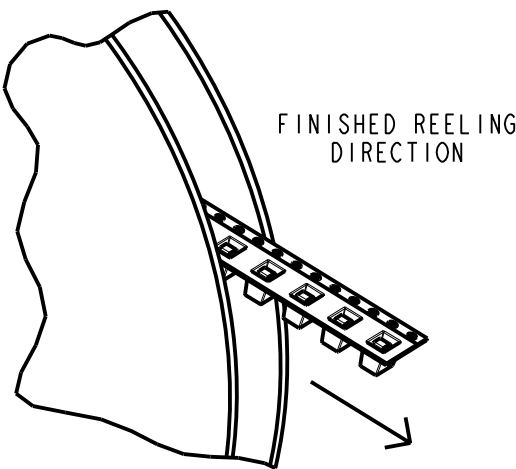
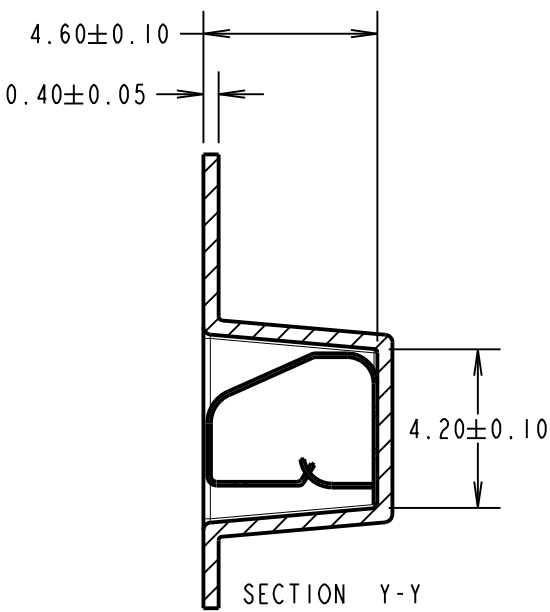
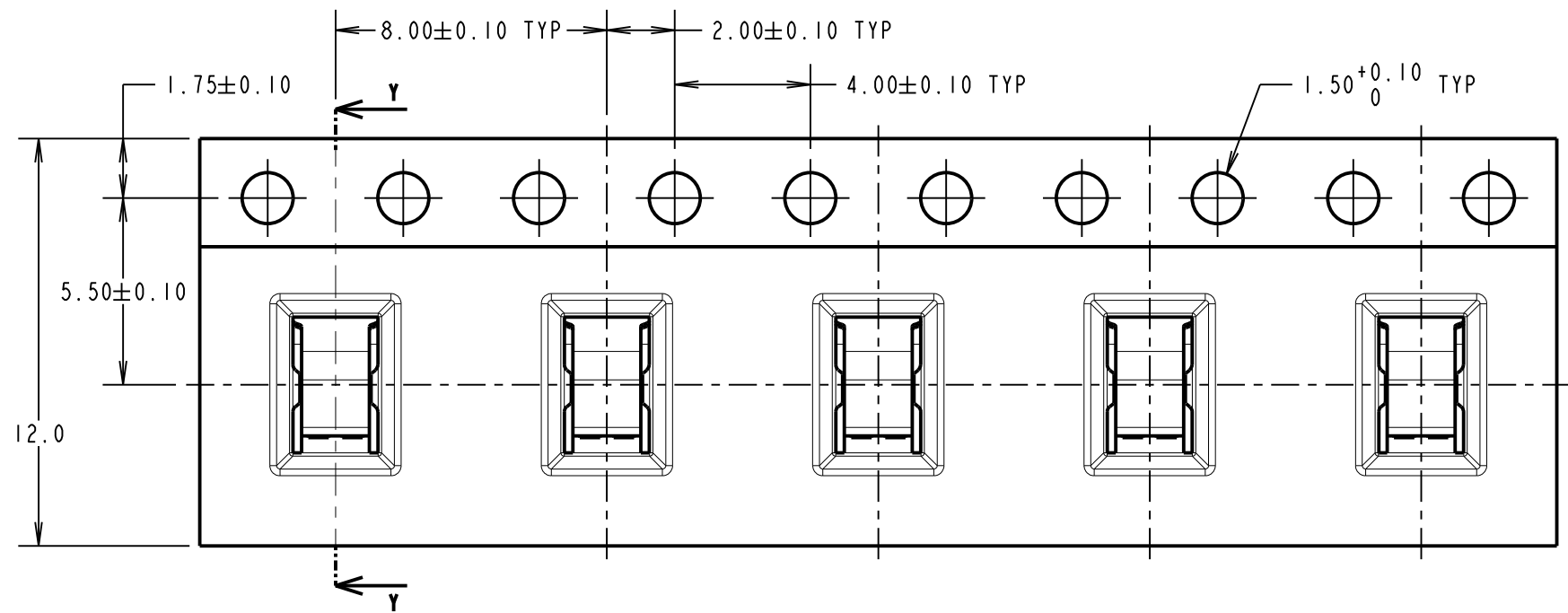
IF IN DOUBT - ASK

©

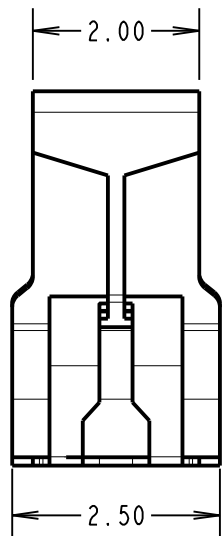
NOT TO SCALE

THIRD ANGLE PROJECTION

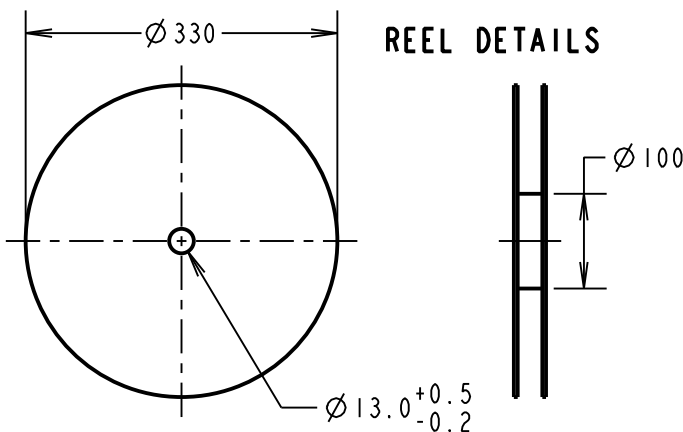
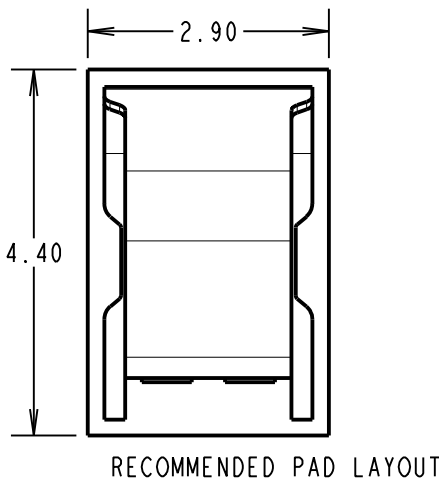
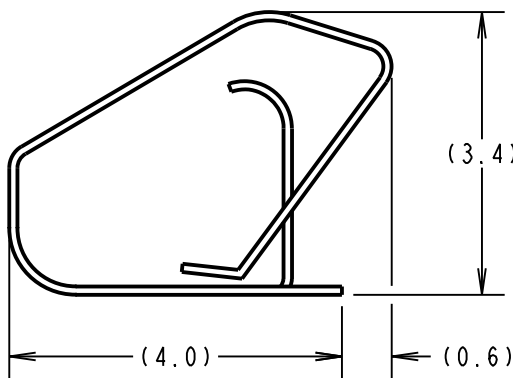
ALL DIMENSIONS IN mm



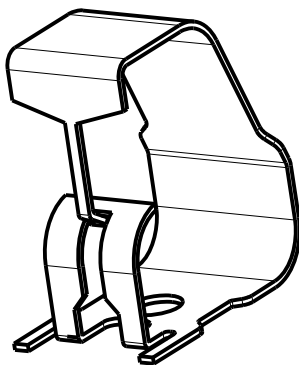
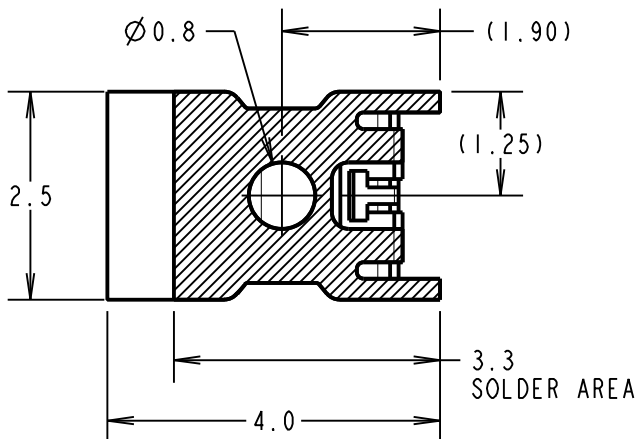
COMPONENT DETAILS



COMPONENT AT MINIMUM
RECOMMENDED HEIGHT



REEL DETAILS



SCALE 9

COMPONENT SPECIFICATION:
MATERIAL = TITANIUM COPPER ALLOY,
0.10mm THICK
FINISH = 0.7µ-1.3µ NICKEL, GOLD FLASH
ON CONTACT AND 2.54µ MIN 100% TIN
ON FOOT AREA.
RECOMMENDED WORKING HEIGHT = 3.80mm / MIN FORCE = 1.2N
RECOMMENDED MINIMUM WORKING HEIGHT = 3.40mm
ELECTRICAL:
CURRENT RATING = 6A
MECHANICAL:
DURABILITY = 2000 CYCLES
ENVIRONMENTAL:
OPERATING TEMPERATURE = -55°C TO +125°C

NOTES:
1. QUANTITY PER REEL = 1800.
2. ALL TOLERANCES ARE: X.X = ±0.30mm
X.XX = ±0.15mm
UNLESS OTHERWISE STATED.

SB	7	21.11.13	12234
NAME	ISS.	DATE	C/NOTE
APPROVED:	S.BENNETT		
CHECKED:	S.FLOWER		
DRAWN:	R.ADDE		
CUSTOMER REF.:			
ASSEMBLY DRG:			

HARWIN

www.harwin.com
technical@harwin.com

THIS DRAWING AND ANY
INFORMATION OR DESCRIPTIVE
MATTER SET OUT HEREON ARE
CONFIDENTIAL AND COPYRIGHT
PROPERTY OF THE HARWIN
GROUP AND MUST NOT BE
DISCLOSED, LOANED, COPIED
OR USED FOR MANUFACTURING,
TENDERING OR FOR ANY
OTHER PURPOSE WITHOUT
THEIR WRITTEN PERMISSION.

TOLERANCES
X = ±1mm
X.X = ±0.25mm
X.XX = ±0.10mm
X.XXX = ±0.01mm
ANGLES = ±5°
UNLESS STATED

MATERIAL:

SEE ABOVE

FINISH:

SEE ABOVE

S/AREA:

mm²

TITLE:

SMT SHIELD FINGER (4.5mm)
IN TAPE AND REEL

DRAWING NUMBER:

S7111-42R

SHT
2
OF
2

Mouser Electronics

Authorized Distributor

Click to View Pricing, Inventory, Delivery & Lifecycle Information:

Harwin:

S7111-42R